

## BitRaser® Mobile Diagnostics – Diagnosing iOS® Devices

This guide walks you through step-by-step instructions on how to diagnose iOS devices running on iOS versions 9.0 and above like iPhone 13, iPhone 13 Pro, iPhone 13 Pro Max iPhone 13 mini, iPhone 12 Pro, iPhone 12 Pro Max, iPhone 12 mini, iPhone 12, iPhone 11 Pro Max, iPhone 11, Apple iPhone XR, Apple iPhone XS Max etc., and iPad® by using BitRaser Mobile Eraser & Diagnostics software. Instructions provided below are divided into 3 stages to provide you an easy-to-understand and practical method for performing automated & assisted diagnostic tests on iOS devices with nominal efforts.

### STAGE 1 (One-time) 1 MINUTES 🕒

Download- BitRaser Mobile Diagnostics executable file from the email received post purchase.

### STAGE 2 (One-time) 4 MINUTES 🕒

Install the BitRaser Mobile Diagnostics tool on the Windows machine.

### STAGE 3

Launch and start the BitRaser Mobile Eraser & Diagnostics tool upon successful installation.

These instructions help you get started with diagnosing iOS devices in less than 5 minutes

## REQUIREMENTS



### Processor:

Intel-compatible (x86, x64)



### RAM:

4 GB Minimum (8 GB Recommended)



### Hard Disk:

1 GB of free space in boot volume



### Operating System:

Windows 11, 10, 8.1, 8, 7



### iOS Version for Device

**Erasure or Diagnostics:**  
All versions supported for Erasure



### Android Version for Device

**Erasure or Diagnostics:**  
5.0 and above

## TOP RELATED TOPICS

[How To Diagnose Android Devices](#)

[How To Wipe Android Devices](#)

[How To Wipe iOS Devices](#)

[How To Wipe HDD, PC & Laptops](#)

[How To Wipe Mac](#)

[How To Wipe Multiple Drives](#)

[How To Wipe Over Network](#)

## STAGE 1

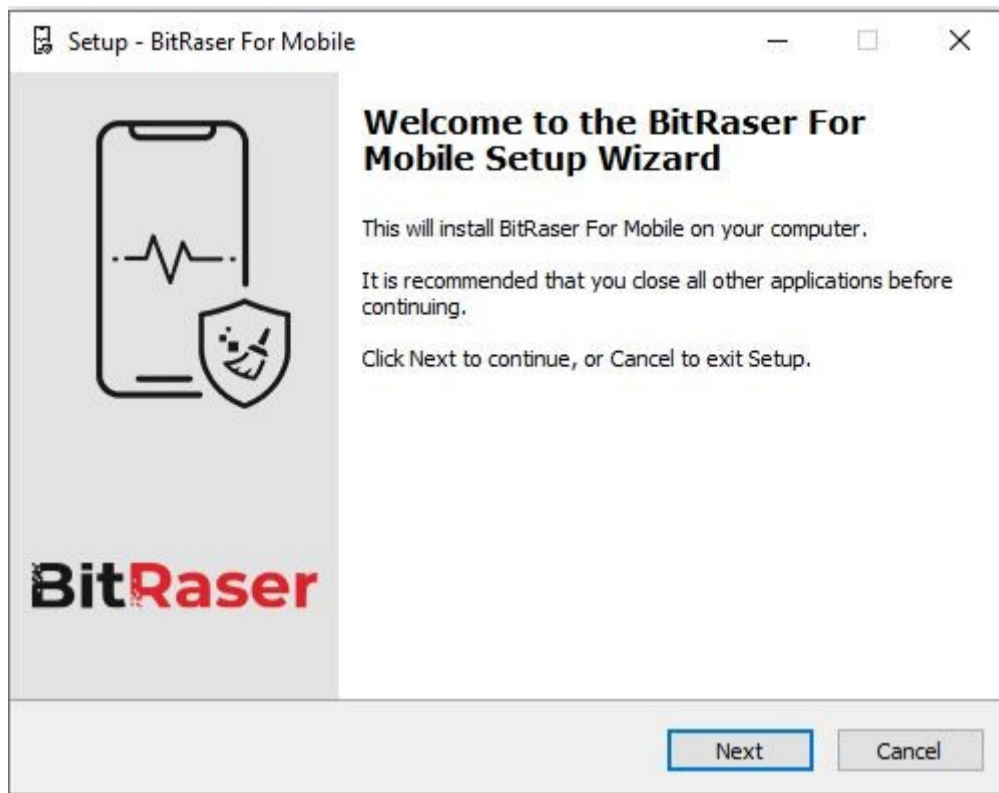
Download- BitRaser Mobile Diagnostics executable file from the email:

- **STEP 1** Click on the application Download Link received on your email after purchase. Alternatively you can also download the set up file by accessing the support section in your [Cloud account](#).
- **STEP 2** Once the download is complete, extract the setup from the ZIP file and start the installation to the default folder.

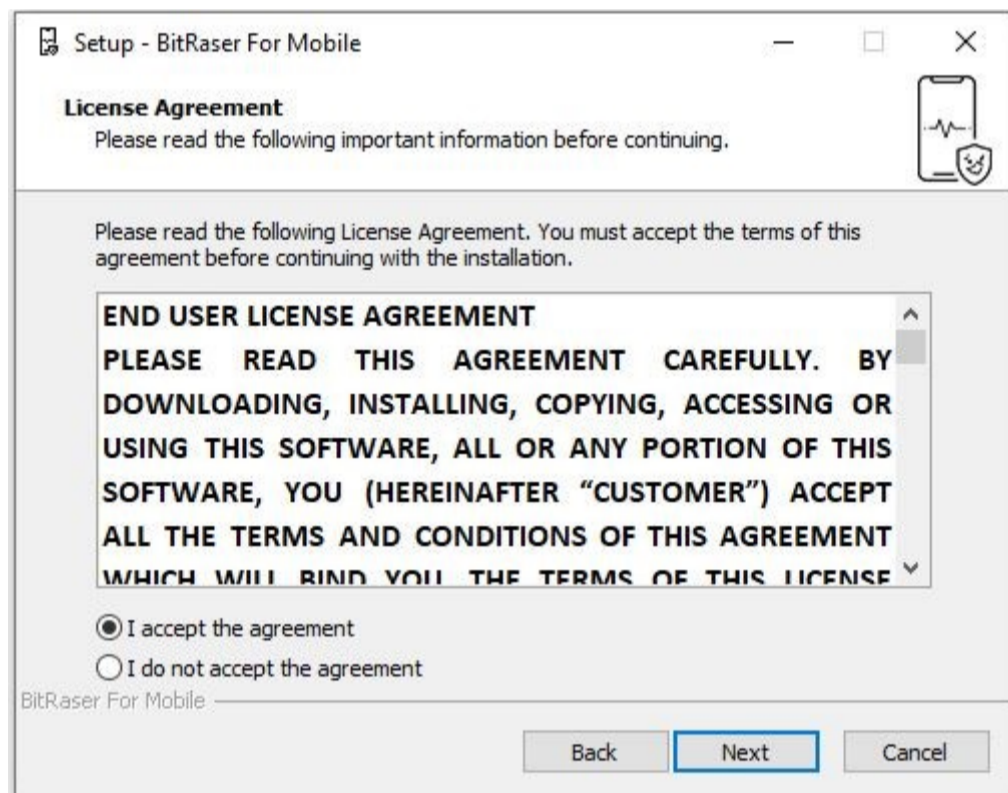
## STAGE 2

Install the BitRaser Mobile Diagnostics tool on the Windows machine-:

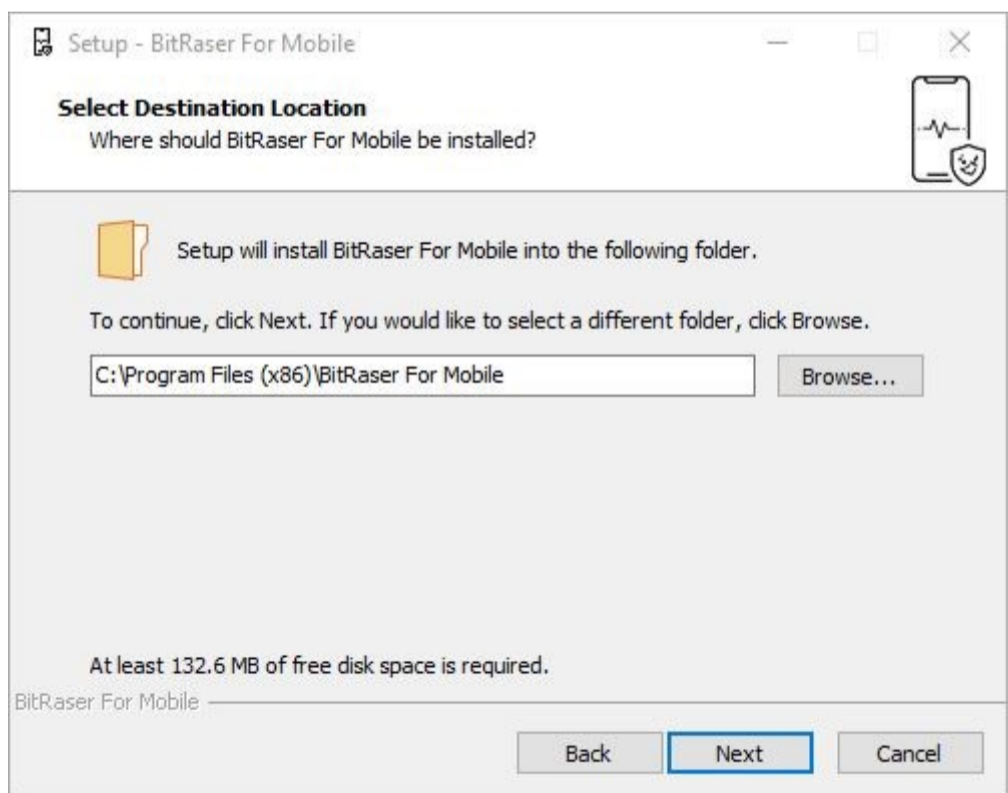
- **STEP 1** Double click the- executable file to start the installation process.
- **STEP 2** Refer the following screens to complete the installation



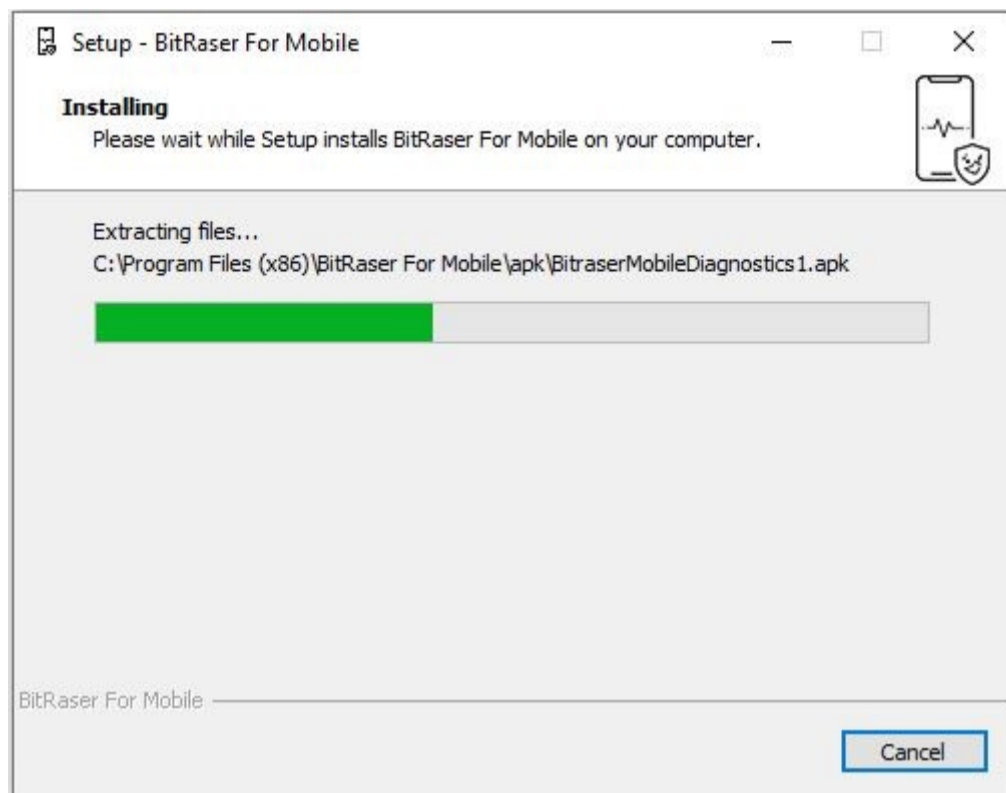
- **STEP 3** Accept the License agreement and click 'Next'



- **STEP 4** Select the path for the installation directory.



- **STEP 5** You will then see a progress bar showing Installation process.

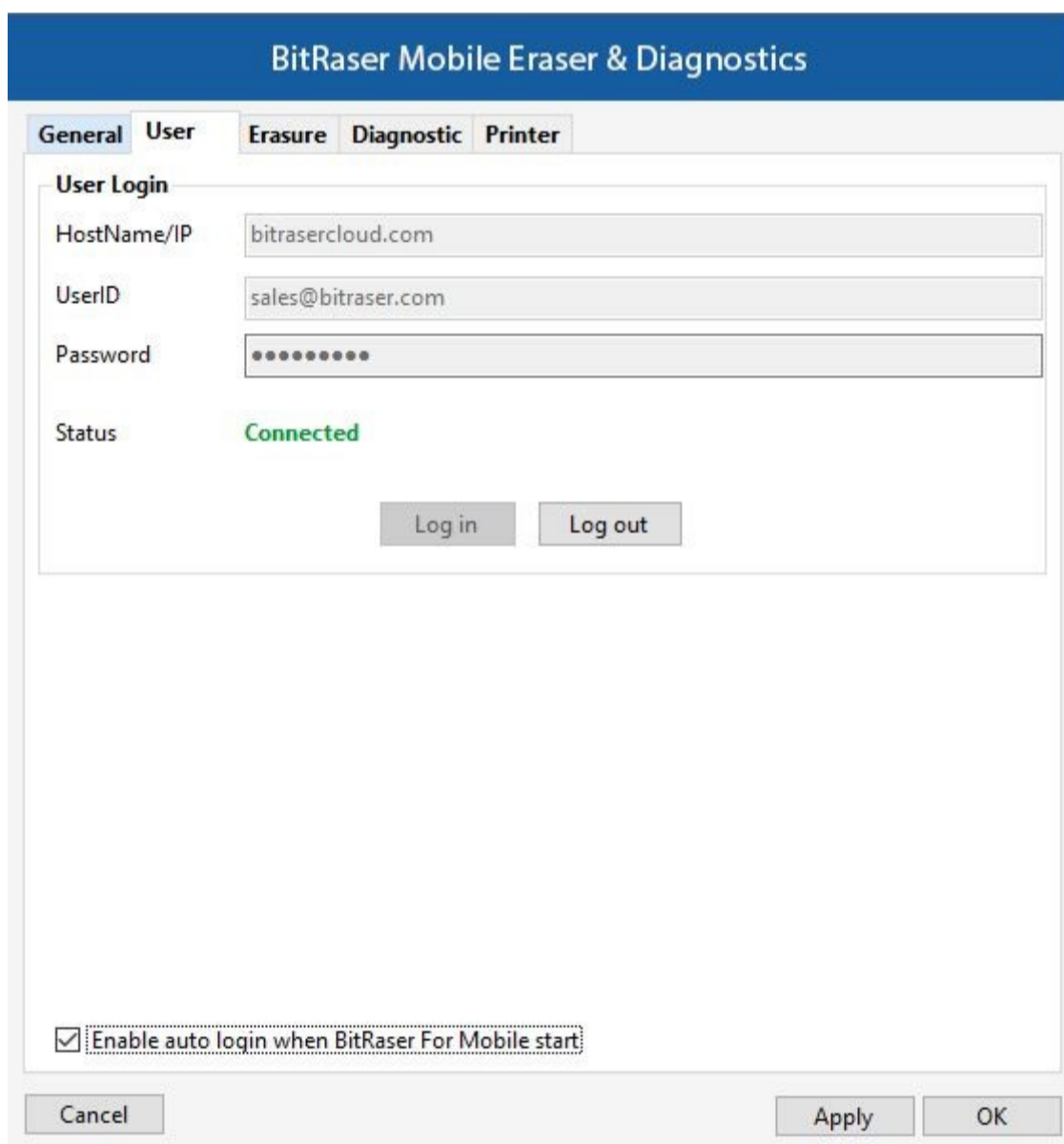


- **STEP 6** Software installation is completed.

### STAGE 3

Launch and Start the BitRaser Mobile Eraser & Diagnostics Tool to Begin Diagnostics Process:

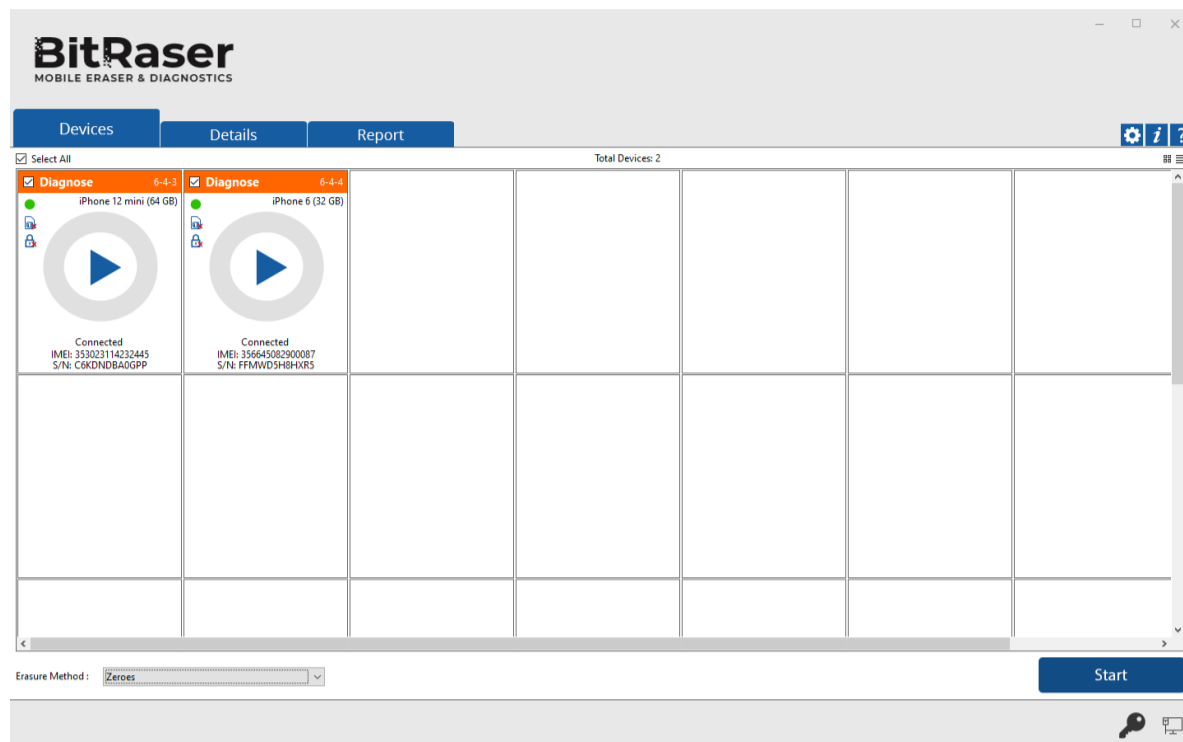
- **STEP 1** Login to your Cloud account to acquire the licenses purchased. After the connection is established status will show as 'connected'.



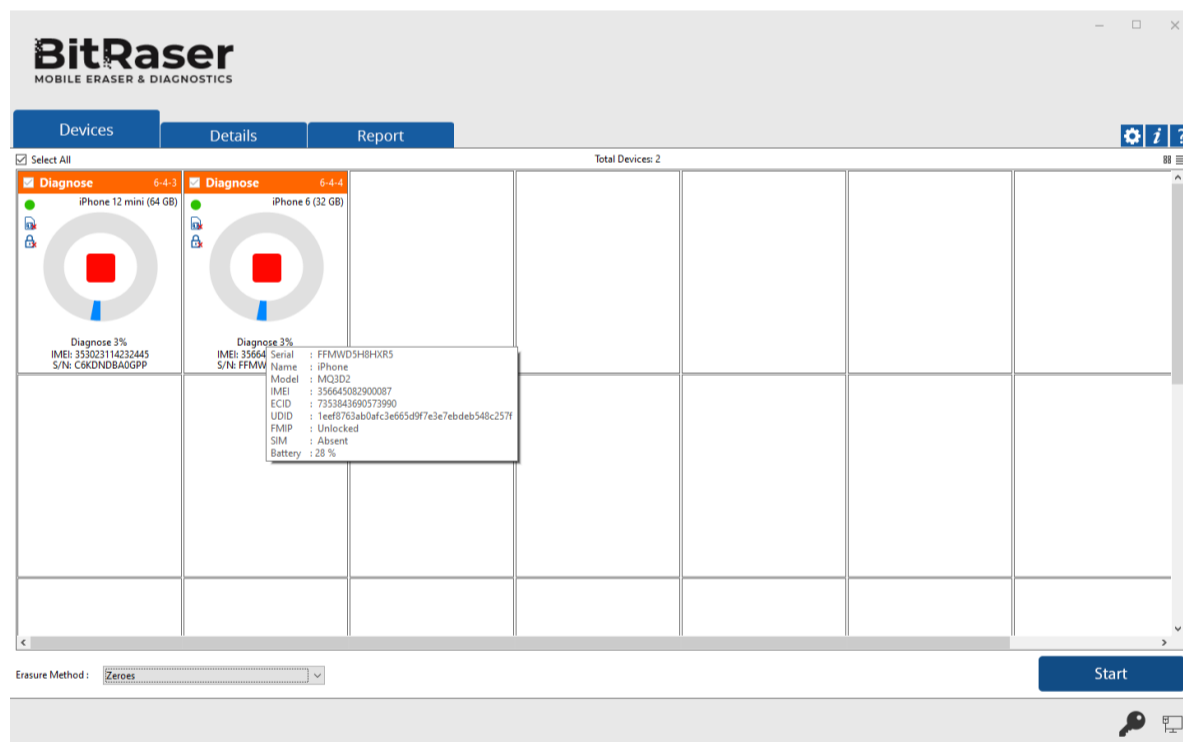
- **STEP 2** Click OK.  
(Select the check box of auto login, so that when the next time you launch the tool, the application gets connected to the cloud account automatically)
- **STEP 3** Connect the iOS device(s) to the machine via USB cable.

(The main interface will display all the connected devices with 'Erase' as the default action with checkbox. Click on 'Erase' to switch the process to 'Diagnose'.)

- **STEP 4** Click on the Start Button as displayed below to start the diagnostics process after clicking on the Trust prompt on the iPhone or iOS device.

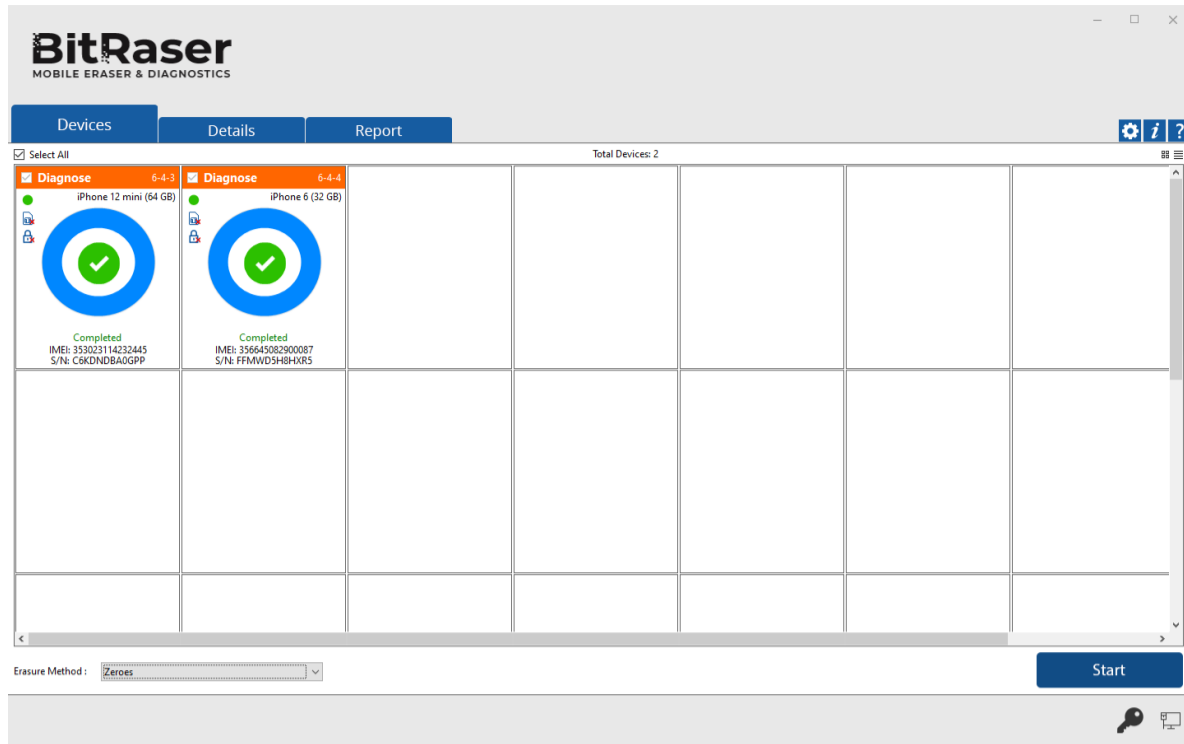


- **STEP 5** The Diagnostics process will start on the device once you click on the 'Start' button. The application will start with a series of Automatic Diagnostics test and then proceed to manual (assisted) diagnostics.



- **STEP 6** The Diagnostics process has now been completed on the iOS device. After successful completion of tests, the software interface will

display 'Completed' as the final status for all the diagnosed devices.



**The digitally signed Diagnostics Reports for all the tested devices will be automatically saved to your BitRaser Cloud account.**